

EB-6 Ethernet Bridge

HIGH SPEED IP/ETHERNET DATALINK

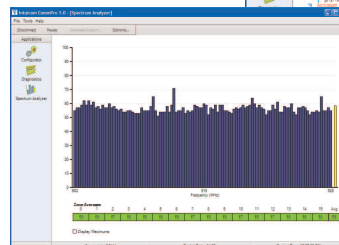


Intuicom's EB-6 Ethernet Bridge is a high speed Ethernet data transceiver designed for long range communications in commercial, industrial, and military applications. Providing wireless bridging of remote Ethernet devices, the EB-6 is ideally suited for a variety of applications ranging from basic wireless bridging to monitoring and controlling unattended systems such as those linked to SCADA terminals, automated security systems, and CBRN detection networks.

FUNCTIONALITY AND FLEXIBILITY

The EB-6 Ethernet Bridge offers a broad range of end-user configurable parameters and capabilities to satisfy a variety of Ethernet requirements. Providing up to 867 Kbps of available bandwidth, the network is fully scalable to facilitate multiple integration solutions. Designed for flexibility, the rugged EB-6 can be operated in point-to-point or point-to-multipoint mode and can be configured as a master, slave, or repeater.

EB-6 Ethernet Bridge comes bundled with Intuicom's New CommPro™ Software



“BEST-IN-CLASS” RF PERFORMANCE

Employing Intuicom's robust and secure frequency hopping spread spectrum technology, the EB-6 is inherently resistant to interference from other RF equipment including other spread spectrum radios. Empowered with an ultra sensitive and highly selective RF transceiver, the EB-6 provides real-time, robust communication links with 32-bit CRC with error correction. The Intuicom EB-6 is capable of delivering the maximum output power allowable by the FCC for unlicensed operation—the benefit of which is realized in exceptional performance, with up to 60 miles range (LOS).

EASE OF USE

The EB-6 is compatible with Intuicom's CommPro™ software, which provides a complete toolset to assist in designing, configuring, monitoring and optimizing your wireless solutions. Going from the box to the field has never been easier.

With proven performance in dense RF environments, Intuicom's wireless networks power through the congestion to provide reliable data transport where other technologies fall short.

To learn more about enabling wireless networking for your applications, please contact us at: info@intuicom.com or call (303) 449-4330

KEY FEATURES

- Up to 60 mile range
- License-free operation
- Secure 902-928 MHz FHSS technology
- Point-to-point or point-to-multipoint networks
- Any one unit may serve as a master, remote, or repeater
- Up to 867 Kbps over the air data rates
- Separate diagnostics port
- Low power consumption
- Built-in crossover switch
- Ruggedized aluminum case
- Made in the USA
- Supported by Intuicom CommPro™ Software



EB-6 Ethernet Bridge

HIGH SPEED IP/ETHERNET DATALINK

GENERAL SPECIFICATIONS

Enclosure	Ruggedized extruded aluminum
Size	H: 56.6 mm x W: 74.4 mm x L: 165.1 mm
Weight	441 g
Operating Temperature	-40° C to +60° C
Connectors/Signals	
External Antenna	N Type Female
Data	RJ-45
Diagnostic	3-pin proprietary
Power	2.1 mm x 5.5 mm jack
Input Voltage	6-30 VDC
Power Consumption (typical @ 12 VDC)	
Idle	70 mA
Receive	150 mA
Transmit (maximum)	550 mA
Operating Modes	
System Configurations	Point-to-Point, Point-to-Multipoint
Unit Operating Modes	Base, Repeater, Remote

WIRELESS TRANSCEIVER

Frequency Range	902 - 928 MHz
Transmitter	
Output Power	100 mW to 1 W (+30 dBm); Programmable
Range, Line of Sight	60 Miles at 614 Kbps 20 Miles at 867 Kbps
Modulation	Spread Spectrum, GFSK
Occupied Bandwidth	1.88 MHz - Wide Band
Spreading Method	Frequency Hopping / FCC DTS
Hopping Patterns	15 per band, 105 total, user selectable
Hopping Channels	39 - Wide Band
Hopping Bands	7, user selectable
Receiver	@ 12 VDC
Sensitivity	-101 dBm at 10 ⁻⁶ BER at 614 Kbps -95 dBm at 10 ⁻⁶ BER at 867 Kbps
Data Transmission	
Error Detection	32 Bit CRC, retransmit on error
Data Encryption	Substitution, dynamic key
Data bit Rate*	867 Kbps (point-to-point) 614 Kbps (point-to-multipoint)
Data Interface	10BaseT

* Assumes 75% frequency availability, no repeater.
Note: Specifications subject to change without notice.