

AXIOM

Multi-Featured, Multi-Frequency Broadband Solution



Intuicom continues its best-in-class tradition of wireless solutions with the AXIOM™ line of broadband products. This advanced wireless solution provides industry-leading security, extended range, and the highest throughput demanded by today's bandwidth intensive applications. Other standard features include an embedded GPS for positioning and RSSI/Power/Reset panel.

Secure: AES encryption, advanced IP filtering, WPA2, multilevel authentication, user access and MAC Access Control provide the user with the tools to ensure the highest level of data integrity and protection against malicious attacks.

Flexible: Implementing dynamic modulation techniques, auto-optimizing bandwidth allocation the AXIOM delivers the performance demanded by today's wireless applications. AXIOM offers this performance in combination with additional frequency choices and configurations to provide a broad array of solutions.

Network Management Made Easy: With Intuicom's Broadband Pro™ software, configuring your wireless network has never been easier. Intuicom's drag and drop configuration makes getting operational a straightforward process, while a variety of real-time network monitoring and reporting tools provide the means to optimize and manage your network. All of this allows users to easily visualize, manage, optimize, and monitor your communication network.

Features

- Our full featured radio with top performing speeds and features
- 5 GHz and 2.4 GHz options
- Single and dual radio units
- Integrated and external antenna configurations
- Range 20+ miles (LOS)
- Integrated GPS for geolocation
- PoE+ (802.3at) compatible
- RSSI/Power/Reset panel
- Compatible with industry standards as well as offering proprietary protocols
- Channel widths from 5 MHz to 80 MHz
- Each unit is a complete kit - includes heavy-duty mounting hardware, PoE, and 50 meters CAT5E cable
- Compatible with Broadband Pro 5 Network Management Software

Applications

- Video Surveillance
- Traffic and Transportation Control
- Energy Production
- Water and Wastewater Systems
- Agriculture
- Pipeline Monitoring and Leak Detection
- Electrical Utility Applications
- Automation and Control Solutions

Technical Data: AXIOM

SPECIFICATIONS

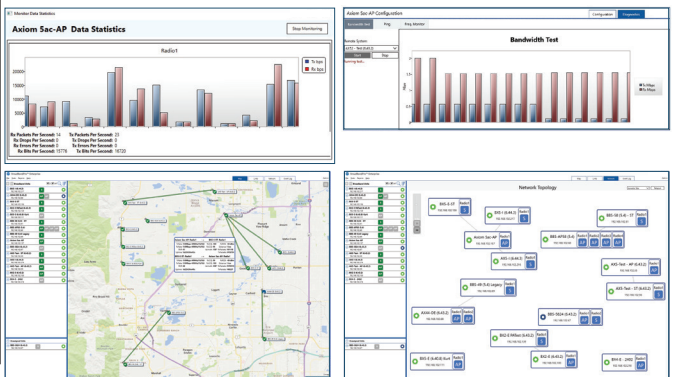
Specification	Description			
General				
	Integrated Unit	External Antenna Unit	Dual Unit - Integrated	Dual Unit - External Antennas
Size	10.4" x 10.4" x 3.7"	8.7" x 10.0" x 3.3"	10.4" x 10.4" x 3.7"	8.7" x 10.0" x 3.3"
Weight	3.9 lbs.	3.4 lbs.	3.9 lbs.	4.4 lbs.
LED Indicators	RSSI/Power/Reset	RSSI/Power/Reset	RSSI/Power/Reset	RSSI/Power/Reset
Number of Radio units	1	1	2	2
Antenna included	20dBi Panel	n/a	20dBi Panel	n/a
Antenna connector	n/a	2 - type N (f)	2 - type N (f)	4 - type N (f)
Temperature rating	-40° to 75°C	-40° to 75°C	-40° to 75°C	-40° to 75°C
Wireless Interface				
Frequency Range**	5.1-5.8 GHz or 2.4-2.48 GHz**			
Peak Transmit Power*	27-30 dBm (w/o antenna)			
Receive Sensitivity	-96 dBm to -72dBm			
Channel Widths	5/10/20/40/ 80 MHz			
Modulations	OFDM, BPSK, QPSK, 16-QAM, 64-QAM			
Protocols*	802.11 a/b/g/n/ac & proprietary			
Data Rates*	up to 866 Mbps in 802.11ac up to 300 Mbps in 802.11n up to 54 Mbps in 802.11a/b/g			
Security				
802.11i WPA-PSK - 802.11i WPA2-PSK - 802.11i WPA-EAP - 802.11i WPA2-EAP - 802.11i TKIP - 802.11i AES-CCM		- 802.11i 802.1X - 802.11i -RSN - Radius Authentication - MAC Access Control List - 128-bit/256-bit AES - Encryption		
IEEE Standards & Features				
- 802.11e WMM and QOS - 802.11h DFS and TPC - 802.1d Ethernet Bridging - 802.1p Traffic Prioritization - 802.1q VLAN - 802.1s Spanning Tree - 802.1w Rapid Spanning Tree - 802.3ab Gigabit Ethernet - 802.3ac Extended Frame Size for 802.1q & 802.1p support - 802.3ad Link Aggregation/Port Bonding/Port Tracking - 802.3i 10 Mbps Ethernet - 802.3u 100 Mbps Ethernet and Auto-Negotiation - 802.3x Full Duplex and Flow Control		- 802.1ad Service Tags - IGMP Internet Group Management - Protocol v1, v2 - OSPF - FTP/TFTP - HTTP - Telnet - Syslog - Routing - Firewall/NAT - NTP - SSH - SNMP - VPN - DHCP Client/Server		
Wireless Regulatory Approvals				
- FCC Part 15.247 - Industry Canada RSS-210 - RoHS Compliant				
Broadband Pro Network Management Software				
- Complete set of visual management tools including spectrum analyzer, bandwidth testing, data statistics and more - Real-Time Mapviews provide network-wide performance status - Live Link Status displays both sides of the radio link by CCQ, throughput, and other parameters - Access to Configuration Parameters from any Network Views - Intuicom's unique Drag & Drop tool simplifies on-boarding new nodes - Complete Network Customization & Control - With BroadBandPro 5, you can filter your network by radio name, IP address, station roles, access point roles, and every other combination possible - Wireless and Data Statistics Monitoring displays in real time - The Alarm Center provides a comprehensive status and analysis report of the entire wireless network - Event Logging Dashboard monitors your complete network health on a single screen - Advanced Reporting features provide for extensive graphic and tabular reports for all units across the network				

Monitor Data Statistics

Axiom Sac-AP Data Statistics

Radio1

</



SPECIFICATIONS SUBJECT TO CHANGE

Intuicom Broadband Radios require professional installation
 * Wireless Protocols, Transmit Power, and Data Rates are frequency dependent.
 ** Band availability is subject to country regulations.

AXIOM units can be ordered in several variations:

- Standard Data Rates or AC rates
- Integrated or External Antennas
- 5 GHz or 2.4 GHz
- Single or Dual units