

BBX

Secure, Flexible Broadband Connectivity in Multiple Frequencies



The Intuicom BBX product family provides connectivity and remote access through a family of robust and secure products that have proven themselves across industries, environments and markets. The BBX products work under the harshest conditions in variety of configurations and frequency band options.

Secure: AES encryption, advanced IP filtering, WPA2, multilevel authentication, user access and MAC Access Control provide the user with the tools to ensure the highest level of data integrity and protection against malicious attacks.

Flexible: Implementing dynamic modulation techniques, auto-optimizing bandwidth allocation the BBX delivers the performance demanded by today's wireless applications. BBX offers this performance in combination with additional frequency choices and configurations to provide a broad array of solutions.

Network Management Made Easy: With Intuicom's Broadband Pro™ software, configuring your wireless network has never been easier. Intuicom's drag and drop configuration makes getting operational a straightforward process, while a variety of real-time network monitoring and reporting tools provide the means to optimize and manage your network. All of this allows users to easily visualize, manage, optimize, and monitor your communication network.

Features

- 5 GHz and 2.4 GHz options
- Single and dual radio units
- Integrated and external antenna configurations
- Range 20+ miles (LOS)
- RSSI/Power/Reset panel
- Data rates from 54 Mbps to 866 Mbps
- Compatible with industry standards as well as offering proprietary protocols
- Channel widths from 5 MHz to 80 MHz
- Each unit is a complete kit - includes heavy-duty mounting hardware, PoE, and 50 meters CAT5E cable
- Compatible with Broadband Pro 5 Network Management Software

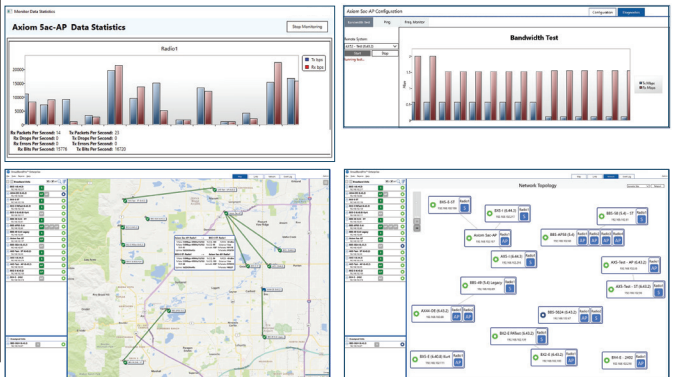
Applications

- Video Surveillance
- Traffic and Transportation Control
- Energy Production
- Water and Wastewater Systems
- Agriculture
- Pipeline Monitoring and Leak Detection
- Electrical Utility Applications
- Automation and Control Solutions

Technical Data: BBX

SPECIFICATIONS

Specification	Description			
General				
	Integrated Unit	External Antenna Unit	Dual Unit - Integrated	Dual Unit - External Antennas
Size	10.4" x 10.4" x 3.7"	8.7" x 10.0" x 3.3"	10.4" x 10.4" x 3.7"	8.7" x 10.0" x 3.3"
Weight	3.9 lbs.	3.4 lbs.	3.9 lbs.	4.4 lbs.
LED Indicators	RSSI/Power/Reset	RSSI/Power/Reset	RSSI/Power/Reset	RSSI/Power/Reset
Number of Radio units	1	1	2	2
Antenna included	20dBi Panel	n/a	20dBi Panel	n/a
Antenna connector	n/a	2 - type N (f)	2 - type N (f)	4 - type N (f)
Temperature rating	-40° to 75°C	-40° to 75°C	-40° to 75°C	-40° to 75°C
Wireless Interface			Wireless Regulatory Approvals	
Frequency Range** 5.1-5.8 GHz or 2.4-2.48 GHz**			- FCC Part 15.247	
Peak Transmit Power* 27-30 dBm (w/o antenna)			- Industry Canada RSS-210	
Receive Sensitivity -96 dBm to -72dBm			- RoHS Compliant	
Channel Widths 5/10/20/40/ 80 MHz			Broadband Pro Network Management Software	
Modulations OFDM, BPSK, QPSK, 16-QAM, 64-QAM			- Complete set of visual management tools including spectrum analyzer, bandwidth testing, data statistics and more	
Protocols* 802.11 a/b/g/n/ac & proprietary			- Real-Time Mapviews provide network-wide performance status	
Data Rates* up to 866 Mbps in 802.11ac up to 300 Mbps in 802.11n up to 54 Mbps in 802.11a/b/g			- Live Link Status displays both sides of the radio link by CCQ, throughput, and other parameters	
Security			- Access to Configuration Parameters from any Network Views	
- 802.11i WPA-PSK			- Intuicom's unique Drag & Drop tool simplifies on-boarding new nodes	
- 802.11i WPA2-PSK			- Complete Network Customization & Control - With BroadBandPro 5, you can filter your network by radio name, IP address, station roles, access point roles, and every other combination possible	
- 802.11i WPA-EAP			- Wireless and Data Statistics Monitoring displays in real time	
- 802.11i WPA2-EAP			- The Alarm Center provides a comprehensive status and analysis report of the entire wireless network	
- 802.11i TKIP			- Event Logging Dashboard monitors your complete network health on a single screen	
- 802.11i AES-CCM			- Advanced Reporting features provide for extensive graphic and tabular reports for all units across the network	
IEEE Standards & Features			Axiom Sac-AP Data Statistics	
- 802.11e WMM and QOS			- 802.11ad Service Tags	
- 802.11h DFS and TPC			- IGMP Internet Group Management	
- 802.1d Ethernet Bridging			- Protocol v1, v2	
- 802.1p Traffic Prioritization			- OSPF	
- 802.1q VLAN			- FTP/TFTP	
- 802.1s Spanning Tree			- HTTP	
- 802.1w Rapid Spanning Tree			- Telnet	
- 802.3ab Gigabit Ethernet			- Syslog	
- 802.3ac Extended Frame Size for 802.1q & 802.1p support			- Routing	
- 802.3ad Link Aggregation/Port Bonding/Port Tracking			- Firewall/NAT	
- 802.3i 10 Mbps Ethernet			- NTP	
- 802.3u 100 Mbps Ethernet and Auto-Negotiation			- SSH	
- 802.3x Full Duplex and Flow Control			- SNMP	
			- VPN	
			- DHCP Client/Server	
			Axiom Sac-AP Network Map	
			Axiom Sac-AP Network Topology	



SPECIFICATIONS SUBJECT TO CHANGE

Intuicom Broadband Radios require professional installation
 * Wireless Protocols, Transmit Power, and Data Rates are frequency dependent.
 ** Band availability is subject to country regulations.

BBX units can be ordered in several variations:

- Standard Data Rates or AC rates
- Integrated or External Antennas
- 5 GHz or 2.4 GHz
- Single or Dual units